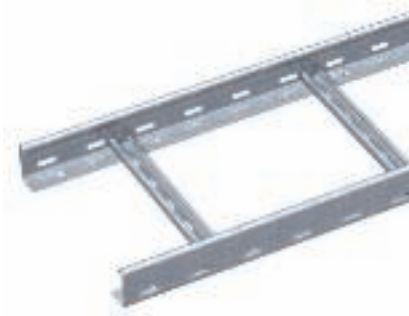


Cable ladder LG 60 VS



The cable ladder is shipped folded up.

You can find the appropriate clamp clip of type 2056 in the Ladder systems section. Magnetic shield insulation without cover 10 dB, with cover 15 dB.

Cable ladder with perforated side rail of side height 60 mm with riveted C profile frames, open in an upwards direction (VS version).

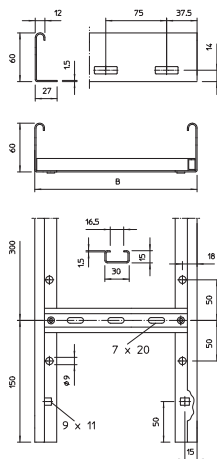
Type	Width mm	Rail thickness mm	Pack. m	Weight kg/100 m	Item No.
LG 620 VS 3 FS	200	1,5	3	281,700	6208538
LG 630 VS 3 FS	300	1,5	3	306,000	6208541
LG 640 VS 3 FS	400	1,5	3	330,000	6208544
LG 650 VS 3 FS	500	1,5	3	354,300	6208547
LG 660 VS 3 FS	600	1,5	3	378,300	6208550
LG 620 VS 3 FT	200	1,5	3	298,300	6208562
LG 630 VS 3 FT	300	1,5	3	324,300	6208566
LG 640 VS 3 FT	400	1,5	3	350,000	6208570
LG 650 VS 3 FT	500	1,5	3	376,000	6208574
LG 660 VS 3 FT	600	1,5	3	401,700	6208578
LG 620 VS 6 FS	200	1,5	6	273,800	6208627
LG 630 VS 6 FS	300	1,5	6	298,000	6208630
LG 640 VS 6 FS	400	1,5	6	322,200	6208633
LG 650 VS 6 FS	500	1,5	6	346,300	6208636
LG 660 VS 6 FS	600	1,5	6	370,500	6208639
LG 620 VS 6 FT	200	1,5	6	290,000	6208650
LG 630 VS 6 FT	300	1,5	6	315,800	6208653
LG 640 VS 6 FT	400	1,5	6	334,200	6208656
LG 650 VS 6 FT	500	1,5	6	367,500	6208659
LG 660 VS 6 FT	600	1,5	6	393,300	6208661

St Steel

FS Strip-galvanised

FT Hot-dip galvanised

Dimensions

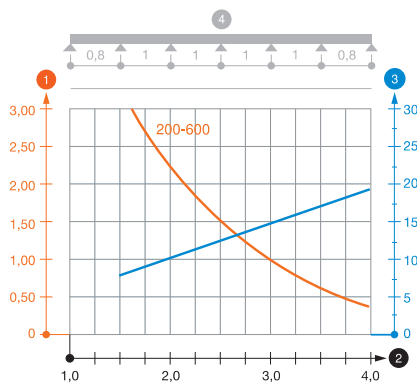


Type	Length mm	Width mm	Rail thickness mm	Useful cross- section cm ²	Rung spacing mm
LG 620 VS 3 FS	3000	200	1,5	98	300
LG 630 VS 3 FS	3000	300	1,5	148	300
LG 640 VS 3 FS	3000	400	1,5	198	300
LG 650 VS 3 FS	3000	500	1,5	248	300
LG 660 VS 3 FS	3000	600	1,5	298	300
LG 620 VS 3 FT	3000	200	1,5	98	300
LG 630 VS 3 FT	3000	300	1,5	148	300
LG 640 VS 3 FT	3000	400	1,5	198	300
LG 650 VS 3 FT	3000	500	1,5	248	300
LG 660 VS 3 FT	3000	600	1,5	298	300
LG 620 VS 6 FS	6000	200	1,5	98	300
LG 630 VS 6 FS	6000	300	1,5	148	300
LG 640 VS 6 FS	6000	400	1,5	198	300
LG 650 VS 6 FS	6000	500	1,5	248	300
LG 660 VS 6 FS	6000	600	1,5	298	300
LG 620 VS 6 FT	6000	200	1,5	98	300
LG 630 VS 6 FT	6000	300	1,5	148	300
LG 640 VS 6 FT	6000	400	1,5	198	300
LG 650 VS 6 FT	6000	500	1,5	248	300
LG 660 VS 6 FT	6000	600	1,5	298	300

Cable ladder LG 60 VS

Load

Type	2.0 m	2.5 m	3.0 m	4.0 m
	kN/m	kN/m	kN/m	kN/m
LG 620 VS 3 FS	2,25	1,5	1,1	0,45
LG 630 VS 3 FS	2,25	1,5	1,1	0,45
LG 640 VS 3 FS	2,25	1,5	1,1	0,45
LG 650 VS 3 FS	2,25	1,5	1,1	0,45
LG 660 VS 3 FS	2,25	1,5	1,1	0,45
LG 620 VS 3 FT	2,25	1,5	1,1	0,45
LG 630 VS 3 FT	2,25	1,5	1,1	0,45
LG 640 VS 3 FT	2,25	1,5	1,1	0,45
LG 650 VS 3 FT	2,25	1,5	1,1	0,45
LG 660 VS 3 FT	2,25	1,5	1,1	0,45
LG 620 VS 6 FS	2,25	1,5	1,1	0,45
LG 630 VS 6 FS	2,25	1,5	1,1	0,45
LG 640 VS 6 FS	2,25	1,5	1,1	0,45
LG 650 VS 6 FS	2,25	1,5	1,1	0,45
LG 660 VS 6 FS	2,25	1,5	1,1	0,45
LG 620 VS 6 FT	2,25	1,5	1,1	0,45
LG 630 VS 6 FT	2,25	1,5	1,1	0,45
LG 640 VS 6 FT	2,25	1,5	1,1	0,45
LG 650 VS 6 FT	2,25	1,5	1,1	0,45
LG 660 VS 6 FT	2,25	1,5	1,1	0,45



Load diagram, LG 60 VS

- 1 Permitted cable tray/ladder load in kN/m without man load
- 2 Support width in m
- 3 Rail bend in mm at permitted kN/m
- 4 Load scheme during testing
- Load curve with cable tray/ladder width in mm
- Strut bend curve according to support width