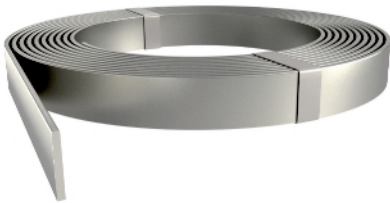


Stainless steel flat conductor



- According to DIN EN 62561-2 (VDE 0185-561-2)
- Corresponds to the requirements of VDE 0185-305 (IEC 62305)
- According to the foundation earthing standard DIN 18014, V4A is required in the earth
- For use in areas at risk of corrosion
- For lightning protection, earthing systems and ring equipotential bonding

Type	Dimension W x H mm	Cross- section mm ²	Normal ring ca. m	Normal ring ca. kg	Weight kg/100 m	Item No.
5052 V2A 30X3.5	30 x 3,5	105	50	42	82,500	5018501
5052 V4A 30X3.5	30 x 3,5	105	50	42	82,425	5018706
5052 V4A 30X3.5	30 x 3,5	105	25	21	82,425	5018730

V2A Stainless steel, grade 304 **V4A** Stainless steel, 316Ti / 316L

Dimensions

